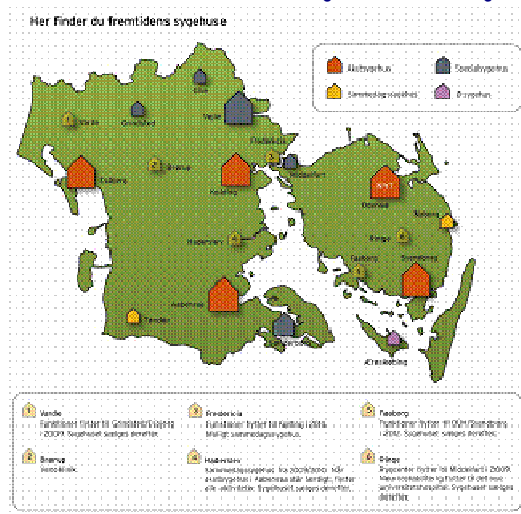


**Medical specialists in psychiatry in the Region of Southern Denmark
Request number of posts n. 3
Deadline of offer availability February 1st, 2010**



The psychiatry in the Region of Southern Denmark is looking for medical specialists in psychiatry as per 1 February 2010 or as soon as possible thereafter

The psychiatry in the Region of Southern Denmark is a joint hospital with departments and functions dispersed over the region's more than 12,000 sq. km. in southern Denmark. In the general psychiatry, we have an annual 7,552 discharges and 167,730 outpatients.

For one of our departments in **Kolding**, we are looking for medical specialists in psychiatry with a high professional level and well-developed interpersonal skills who can participate in interdisciplinary collaboration involving the assessment, diagnosis and treatment of adults over the age of 21 with all types of mental disorders such as depression, mania, chronic psychosis and personality disorders.

The department is a general psychiatric department with 55 beds in two open sections and one closed section. The department receives patients from an area of about 122,000 citizens. The department has an annual 600 admissions and 12,500 outpatients and approximately 95 per cent of all admissions are emergency admissions.

The department's staff comprises many professional groups: doctors, nurses, healthcare assistants, social and healthcare help, medical secretaries, medical social workers, psychologists, occupational therapists, physiotherapists and a workshop assistant. The total staff count is approximately 125 employees plus students in the various professional areas who regularly serve their pre-registration year in the department.

It is important to the department that treatment and care is based on a holistic approach so that no treatment stands alone but includes all biological, emotional and social aspects with the weight required by the patient's overall situation.

For one of our two departments in **Esbjerg-Ribe**, we are looking for medical specialists in psychiatry with comprehensive professional psychiatric insight and knowledge who can participate

in binding interdisciplinary collaboration involving the treatment of adults over the age of 21 with mental disorders such as depression, mania, chronic psychosis and personality disorders.

The department is a general psychiatric department with functions dispersed over a wide geographical area in the southwest of Jutland. Esbjerg has two open sections with a total of 36 beds and a closed section with a total of 12 beds. Egebæk-Hviding has two open sections with a total of 33 beds and a forensic psychiatry section with a total of 12 beds. The department also comprises five community psychiatry teams and a number of specialised outpatient functions, including an affective team, a geronto-neuropsychiatric clinic, a schizophrenia clinic, a mobile team and a psychotherapeutic outpatient's clinic.

The department receives patients from a population of 235,000 people and has an annual 1,360 admissions and 51,600 outpatients. The vast majority of the admissions are emergency admissions.

The department staff comprises many different professional groups and currently totals approximately 380 employees, including 14 consultants and 18 junior doctors. To this should be added students within the various professional areas who regularly serve their pre-registration year in the department.

The general psychiatric department in Esbjerg-Ribe is, among other things, well-known for its high-quality treatment of schizophrenic patients and an active research environment.

For both positions, we expect:

- A valid authorisation as medical specialist in psychiatry
- Training and research experience
- Good interpersonal skills

We offer you:

- A positive working environment
- A challenging and stimulating professional environment
- A high professional level
- Supervision
- Personal development.

Contact information

Please send your application and CV to Workindenmark-South on lek@workindenmark.dk and cc: eures@provincia.pv.it

Your application should include a brief motivation for your interest in the job as well as your CV and documentation showing education and job experience. Please submit your application in English. It is important that you either attach a copy of your examination papers and your medical specialist accreditation or send these documents by regular mail.

For further information please contact:

EURES-Adviser Lewe Kuhn +45 72 22 33 41 / E-mail: lek@workindenmark.dk

and

EURES adviser Aurora Scalora +39 0382 597444 / E-mail: eures@provincia.pv.it

The considered integration process (for this offer) in Denmark contains following activities:

- Salary gross income is between 6500 and 8000 € per month. Depends on qualifications.
- Contract duration unlimited employment - OK
- Three month Danish language course (fulltime with continued pay)
- Mentoring arrangement (6 month)
- Helping with bureaucratic affairs (tax card, health insurance card, Danish authorization of the foreign education etc.)
- Looking for career opportunities (husband / wife)
- Helping with house-hunting, placement in schools and kindergarden
- Introduction in the respective municipality (e.g. leisure activities, arrangements etc.)
- Pre- arrival trips (informative meetings/ cultural understanding)
- Development of a “hotline”
- Delivery of a “welcomes-folder”

Structure of the health sector in southern Denmark:

- 4 hospitals distributed in 18 regional locations.
- Cooperation with the 770 practicing doctors
- Responsible for mental treatment.
- With 25.000 employees the biggest employer in the region.